



**Claire Winfield**

*Striation 5 (above)*

"Although at present my work is almost entirely self referential the methods I've used to apply the pigment to the canvas are reflective of my long term interest in the natural processes at work on the beach. It is a place where earth meets water and its appearance reflects a constantly changing dialogue between the two."

**Brenda Whormsley**

*(Main photo top and back cover)*

"You can usually find me exploring along the coast looking for treasure, taking photo's or sitting on the rocks with a cup of tea being mesmerized by the sea. When I paint I use bright colours I am intrigued by the nature of the pigments, some colours float others sink, it's a constant fascination."



**Geoff Stainthorpe**

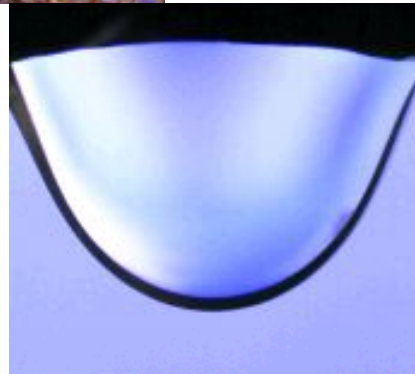
*Epidermis (right)*

"The surface of structures, the covering, the skin and how it implies a hidden world within, is one of the themes I explore regularly through my sculptures to create pieces in which I hope to reflect the fragile nature and balance of life."

**Martin Winfield**

*Droplet (right)*

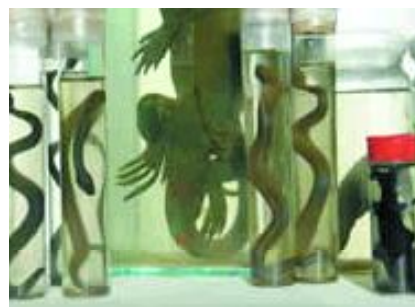
"Photography is a way of seeing selectively and part of the process by which I attempt to resolve the complexities of the visual world into the elemental categories of colour, form & texture."



**Duncan Cameron**

*(Installation right)*

Inspired by underwater diving, installation, sculpture



**NORTH DEVON Festival**  
 be part of it  
[www.northdevonfestival.org](http://www.northdevonfestival.org)



# art on the rocks

Visit the websites below to see more of the artist work

**Brenda Whormsley**  
[www.beewhoo.com](http://www.beewhoo.com)  
[beewhoo@yahoo.com](mailto:beewhoo@yahoo.com)

**Claire Winfield**  
[www.cwinfield.co.uk](http://www.cwinfield.co.uk)  
[claire@cwinfield.co.uk](mailto:claire@cwinfield.co.uk)

**Geoff Stainthorp**  
[www.geoffstainthorp.com](http://www.geoffstainthorp.com)  
[art@geoffstainthorp.com](mailto:art@geoffstainthorp.com)

**Martin Winfield**  
[www.martinwinfield.co.uk](http://www.martinwinfield.co.uk)  
[mj.winfield@dial.pipex.com](mailto:mj.winfield@dial.pipex.com)

**Duncan Cameron**  
[DCameron@strode-college.ac.uk](mailto:DCameron@strode-college.ac.uk)



This is an opportunity to meet the artists during the first phase of a longer term project which will show the evolutionary nature of the art as it unfolds.

For further information contact  
Brenda Whormsley 01271 346236  
bcw@yaho.com  
Geoff Stainthorp 01271 345093  
07866861507 art@geoffstainthorp.com

**art on the rocks**